

# Wind power blade mold maintenance



## Overview

---

Use professional cleaning methods and suitable chemicals to clean the blade surface. Remove dirt, insects, pollen, oil stains, mold, and other pollutants. This prevents these contaminants from affecting blade performance and attracting lightning. A blade maintenance strategy is essential for the successful operation of a wind farm. Our expertise covers all major. The uniqueness of wind turbine blades leads to significant maintenance challenges. Nonetheless, regular maintenance of blades is. According to a study by Sandia National Laboratory in the US, a heavily eroded blade can reduce a turbine's annual energy production by up to 5%.

## Wind power blade mold maintenance

---



### Blade Inspection & Repair

Our expertise covers all major wind turbine models and includes both retrofit work as well as scheduled service and maintenance. The offering covers everything from specific services with individual ...

### [The Role of Blade Maintenance in Wind Power Reliability](#)

Ensure the structural health and reliability of your wind turbine blades with our comprehensive inspection and assessment services. We identify and address known problem areas ...



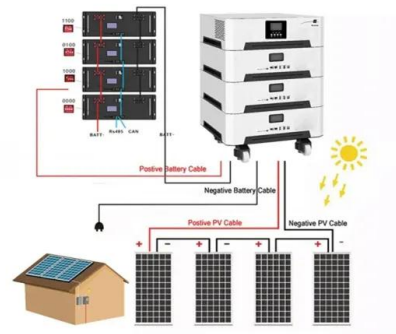
### [A White Paper on Wind Turbine Blade Defect and Damage](#)

The uniqueness of wind turbine blades leads to significant maintenance challenges. Blades are subjected to demanding and wide-ranging environmental conditions and severe operational fatigue ...



### [How to Service and Maintain a Wind Turbine Blade?](#)

In extreme cases, blade failure can even cause the wind turbine to catch fire, leading to catastrophic consequences. However, through maintenance, potential problems of the blades can be ...



### [Recommended Practices for Wind Turbine Blades \\_ACP](#)

This Recommended Practice provides detailed recommendations for wind turbine blade maintenance, bringing forth the clean energy industry's best practices for inspection, transportation, repair, and ...

### [Blade Repair and Maintenance](#)

Routine blade maintenance is essential to prevent damage and ensure the longevity of wind turbine blades. Regular inspections should be conducted to check for any signs of damage, ...



### [Blade Maintenance Strategy for a wind farm](#)

Even though there are general guidelines on how often to inspect and repair blades, it is often required to include specifically tailored elements, based on the turbine (blade) type within a ...

### Wind Turbine Blade Maintenance

Viento Blade Services specializes in blade maintenance, offering composite repairs on blades, nacelles, and spinners. With over two decades of experience, our team ensures the highest quality repairs to ...



### Common Blade Issues And How To Avoid Them

At GEV Wind Power, we specialise in blade inspection, repair, and upgrade services delivered by experienced teams using a range of access solutions. From leading-edge protection to ...

### Wind turbine blade maintenance matters

Founded in 2010, our focus is firmly on offering high-quality blade service and changing the common practice of reactive and expensive wind-turbine blade repairs towards shared risks, preventive ...



- IP65/IP55 OUTDOOR CABINET
- OUTDOOR CABINET WITH AIR CONDITIONER
- OUTDOOR ENERGY STORAGE CABINET
- 19 INCH

## Contact Us

For catalog requests, pricing, or partnerships, please visit:  
<https://www.motocycle3city.pl>