

What is the specific size of the photovoltaic panel



Overview

Q1: What are the standard dimensions of a solar panel in 2025?

A1: For homes, it's about 1. For commercial projects, around 2. Q2: Do bigger panels mean better performance?

Not always. Standard Residential Panels Optimize Space and Handling: The industry-standard 60-cell panel dimensions (65" x 39" x 1.5") aren't arbitrary - they represent the optimal balance between power output, installation ease, and roof space utilization. But what is the wattage?

That is unfortunately not listed at all. Still, most 60-cell solar panels have a size of 39" X 66" and most 72-cell solar panels have sizes of around 39" X 77".

What is the specific size of the photovoltaic panel

12.8V 200Ah



[Solar Panel Size Guide , Best Panel Size for Your Roof](#)

Solar cells are assembled in grids, and the most common configurations are 60-cell panels for residential use and 72-cell panels for commercial or utility use. A 60-cell panel (often seen on ...

[Understanding Photovoltaic Panel Sizes - What You Need to ...](#)

In this detailed guide, we'll explain how solar panel dimensions correlate with wattage, the different size standards, and how to calculate the best fit for your energy goals.



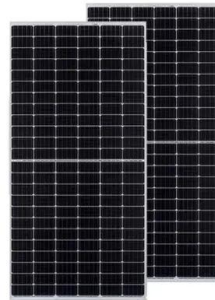
[What Are the Common Solar Panel Sizes?](#)

Still, most 60-cell solar panels have a size of 39" X 66" and most 72-cell solar panels have sizes of around 39" X 77". However, panels with cell counts of 96, 120, and 144 may have different ...



[Understanding Solar Panel Dimensions In 2025: A Complete Size Guide](#)

Understanding solar panel dimensions is crucial for planning your solar system installation, maximizing efficiency, and ensuring compatibility with your available space. In this blog, ...



[standard solar photovoltaic panel sizes explained](#)

What is the most common residential solar photovoltaic panel size I will encounter? The standard residential solar photovoltaic panel size you'll see most often is based on a 60-cell ...



[Perfect Solar Panel Sizes for Your Home \(Expert Sizing Guide\)](#)

Most residential solar panels measure between 65 to 75 inches long and 39 to 41 inches wide, delivering power outputs ranging from 250 to 400 watts per panel.



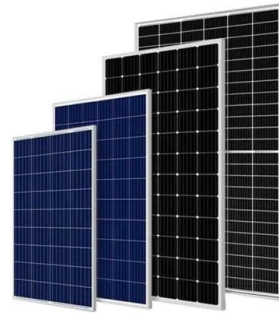
[Standard Solar Panel Sizes And Wattages \(100W-500W Dimensions\)](#)

To bridge that gap of very useful knowledge needed, we have compared and averaged the sizes of 100-watt to 500-watt solar panels available on the market. The goal here is to get to the average solar ...



[Solar Panel Size & Dimensions Guide 2025. Complete Specs](#)

In this comprehensive guide, you'll learn everything you need to know about solar panel sizing, from standard dimensions to weight considerations, helping you determine the perfect solar ...



[Solar Panel Size: 2026 Detailed Guide](#)

In this article, we will discuss all the important aspects of solar panel size. This guide will help you select the right solar panel size through detailed calculations.

[What Is Standard Solar Panel Size? A Comprehensive Overview](#)

With dimensions typically ranging from 60 to 72 cells and common sizes around 65 inches by 39 inches, these measurements play a pivotal role in determining how many panels can fit ...



Contact Us

For catalog requests, pricing, or partnerships, please visit:
<https://www.motocykle3city.pl>