

What is the battery connected to the base station



Overview

The Base battery system has three main components: the battery pack, inverter, and hub. Base batteries run in two directions, which is how Base is able to keep costs low for homeowners. The phrase “communication batteries” is often applied broadly, sometimes. Among various battery technologies, Lithium Iron Phosphate (LiFePO₄) batteries stand out as the ideal choice for telecom base station backup power due to their high safety, long lifespan, and excellent thermal stability. Any battery slowly loses stored energy. Batteries. The ESB-series outdoor base station system utilizes solar energy and diesel engines to achieve uninterrupted off grid power supply. Solar power generation is the use of photovoltaic panels to convert solar energy into electrical energy -48V DC, and then stabilize the load power supply through. Communication industry base stations are huge in number and widely distributed, the requirements for the selected backup energy storage batteries are increasingly high, the most important thing is the safety and stability, energy-saving and environmental protection.

What is the battery connected to the base station



Electric battery

An electric battery is a source of electric power consisting of one or more electrochemical cells with external connections [1] for powering electrical devices. When a battery is supplying power, its ...

[23 Ring Base Station Common Questions \(Solved\)](#)

Gently remove the battery from the compartment, watching the connecting wires connecting the battery to the base station. Do not fully try to remove the battery without first ...

APPLICATION SCENARIOS



[Telecom Base Station Backup Power Solution: Design Guide for 48V ...](#)

Among various battery technologies, Lithium Iron Phosphate (LiFePO4) batteries stand out as the ideal choice for telecom base station backup power due to their high safety, long lifespan, ...



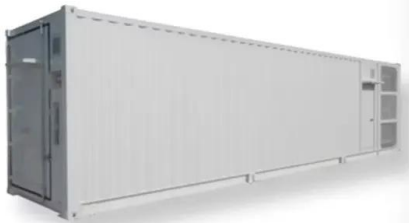
[How the Base battery works: A complete guide to grid connectivity and](#)

This guide covers everything you need to know about how your Base battery operates, protects your home, and supports the power grid. You'll also find answers to common battery myths and top tips to ...



[Telecommunication base station system working principle and system](#)

The system output load is powered by the battery to maintain the normal operation of communication equipment. When the battery is discharged for a period of time and meets the ...



[How a new battery system in the Bronx will work](#)
[Popular Science](#)

Located across the street from a beige middle school building, and not too far from a Planet Fitness and a Dollar Tree, the battery system is designed to send power into the grid at peak ...



[How Do Fail-Safe Redundancy Features Improve Reliability in...](#)

Telecom base stations depend on uninterrupted power to maintain network availability. Fail-safe redundancy features in lithium battery cabinets are designed to eliminate single points of failure, ...



[Lithium battery is the magic weapon for communication base station](#)

Intelligent energy storage lithium battery can effectively protect the base station battery in the event of the accidental short circuit, lightning shock, and other conditions, timely start the ...



[Communication Batteries: Why Telecom Base Stations Have Unique ...](#)

The phrase "communication batteries" is often applied broadly, sometimes including handheld radios, emergency devices, or general-purpose backup batteries. In practice, when ...

Station Battery

Never shortcut any battery - no loops! To build a cascade of batteries (e.g. a stationary battery near solar panels and an APC at base power input), separate networks with transformers.

Lithium battery parameters

Product capacity: 100Ah

Product size: 135*197*35mm

Product weight: 1.82kg

Product voltage: 3.2V

internal resistance: within 0.5



Contact Us

For catalog requests, pricing, or partnerships, please visit:
<https://www.motocykle3city.pl>