

What does the lithium iron phosphate battery station cabinet include



Overview

The lithium iron phosphate battery (LiFePO₄ battery) or LFP battery (lithium ferrophosphate) is a type of using (LiFePO₄) as the material, and a with a metallic backing as the . Because of their low cost, high safety, low toxicity, long cycle life and other factors, LFP batteries are finding a number of roles in, utility-scale station.

What does the lithium iron phosphate battery station cabinet include



[Lithium iron phosphate battery](#)

The lithium iron phosphate battery (LiFePO₄ battery) or LFP battery (lithium ferrophosphate) is a type of lithium-ion battery using lithium iron phosphate (LiFePO₄) as the cathode material, and a graphitic ...

[Understanding the Lithium-Ion Battery Charging Cabinet: Engineering](#)

This article explores the science of lithium-ion charging, the engineering logic behind battery charging cabinets, and the best practices that industries should adopt when implementing a ...



[What is a Battery Charging Cabinet? A Complete Guide to Safe ...](#)

Discover the importance of a battery charging cabinet for safely storing and charging lithium-ion batteries. Learn about features, risks, fire protection, and best practices for workplace ...



[What does the interior of the lithium iron phosphate battery station](#)

Explore the benefits of lithium iron phosphate battery packs, including their use in solar systems, emergency backup, and medical equipment. Learn why these batteries are the future of.



[What Is a LiFePO4 Battery Station and How Does It Work?](#)

A LiFePO4 battery station is a modular battery energy storage system (BESS) that uses lithium iron phosphate cells as the core energy storage units. These stations are scalable, allowing multiple ...



[Lithium-ion Battery Safety](#)

The hazards and controls described below are important in facilities that manufacture lithium-ion batteries, items that include installation of lithium-ion batteries, energy storage facilities, and facilities ...



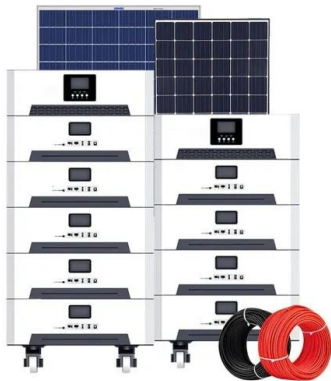
[What parts does the lithium iron phosphate battery station cabinet ...](#)

Key components of LiFePO4 batteries include the cathode (lithium iron phosphate), anode (typically graphite), electrolyte (lithium salt in an organic solvent), and separator (a porous membrane that ...



[Trouble with Power? LiFePO4 Power Stations Explained](#)

This chemistry change brings significant improvements in thermal stability, safety, and battery life. LiFePO4 power stations provide clean, rechargeable electricity that's useful for powering ...



[Lithium iron phosphate battery](#)

Overview Specifications Comparison with other battery types Uses History See also

The lithium iron phosphate battery (LiFePO 4 battery) or LFP battery (lithium ferrophosphate) is a type of lithium-ion battery using lithium iron phosphate (LiFePO 4) as the cathode material, and a graphitic carbon electrode with a metallic backing as the anode. Because of their low cost, high safety, low toxicity, long cycle life and other factors, LFP batteries are finding a number of roles in vehicle use, utility-scale station...

[What is a LiFePO4 Power Station and How Does It Work?](#)

It typically includes a high-capacity LiFePO4 battery pack, a pure sine wave inverter for converting stored energy into usable power, and a battery management system (BMS) to monitor and protect ...



[LiFePO4 Power Station: All You Need to Know - VTOMAN](#)

What Is a LiFePO4 Power Station? A LiFePO4 power station is a portable energy storage system that uses LiFePO4 batteries. These stations provide a reliable power source for a ...



Contact Us

For catalog requests, pricing, or partnerships, please visit:
<https://www.motocykle3city.pl>