



## UK Communication Power Supply Cabinet 20kW Product Manual

---

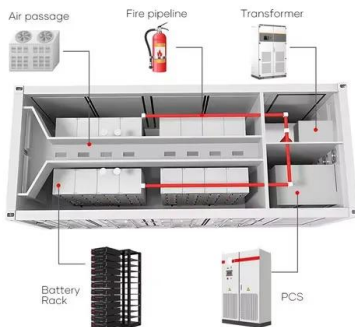


### GVSUPS20KR0B5HS

Highly efficient, easy-to-deploy 20kW, 400V 3-phase UPS. Galaxy VS brings best-in-class power protection and low total cost of ownership to edge, small and medium data centers, as well as to ...

### [KUP User Manual PW8000DPA ST TS\\_841\\_01.pdf](#)

A full UPS Specification is provided in Chapter 9 of this manual. The PW8000DPA ST is a truly flexible, modular UPS system designed around 10 kW or 20 kW UPS power modules. Up to ten UPS ...



### [Symmetra PX 10-40 kW and 20 kW 208 V Operation ...](#)

Find support resources for all your needs, in one place.

### [TRIMOD MCS 20 kW 95 UPS TRIMOD MCS 20kW BATTERY ...](#)

The TRIMOD MCS 20 UPS is equipped with a very simple and intuitive display; the UPS sets up a real time monitoring of all the data concerning operating conditions, efficiency, consumption, load and ...



### 20kW UPS Specifications

Available from Server Room Environments including single phase and three phase outputs for the protection of server rooms and small datacentres. The UPS are rated at 20kVA and the kW-rating ...



### [Eaton 93PS-8 \(20\)-20 \(-C\) User And Installation Manual](#)

Every care has been taken to ensure the accuracy of the information contained in this manual, but no liability can be accepted for any errors or omission.



### [Cabinets and accessories for power supply](#)

We supply and distribute a comprehensive range of passive and active equipment and tooling for network deployment, upgrades, and maintenance, supporting all technologies including FTTH, ...



## BATTERY CABINET

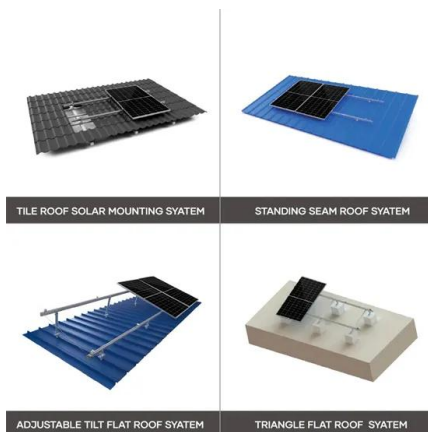
NOTE: This user manual specifies installation and maintenance procedures, technical data and safety instructions for SOCOMEC products. For further information visit the Socomec website: .

...



### [PowerPrime Series Single Phase UPS](#)

The PowerPrime system offers one of the smallest footprints available on the market, providing an exceptional power density of 112kW/m<sup>2</sup> at 20kVA / 20kW capacity in one cabinet, for the ever-space ...



## Contact Us

For catalog requests, pricing, or partnerships, please visit:  
<https://www.motocykle3city.pl>