

# The weight of a photovoltaic panel purlin is more than one meter



## Overview

---

The size of the solar panels used in the project is a primary factor. Larger panels typically require more support, which means more C - Purlin. For example, if you are using standard 1.6m x 1m solar panels, you may need a different layout of C - Purlin. Generally, standard residential photovoltaic panels weigh between 40 and 50 pounds (about 18 to 22 kilograms). In certain cases, the weight of the supporting members is such that it introduces stresses and deformation in base members. The process of sizing legs is figuring out the right height, diameter, and spacing to hold the panels' weight and resist snow. They bear the constant weight of the panels and must withstand decades of environmental stress, including high winds, heavy snow loads, and seismic activity.

## The weight of a photovoltaic panel purlin is more than one meter

---

### [Analyzing Solar Structure Table for One Megawatt System and](#)



The weight of such components is called self-weight. In certain cases, the weight of the supporting members is such that it introduces stresses and deformation in base members.

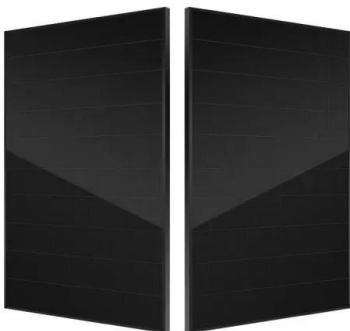
### [How to Calculate Photovoltaic Panel Purlin Numbers: A Step-by-Step](#)

That's essentially what photovoltaic purlins do - and getting the count wrong could turn your solar array into a modern art installation in mid-air. Let's break this down step by step.



### [Detailed analysis of solar panel weight and calculation](#)

For example, a solar panel with an area of 2 square meters may be twice as heavy as a solar panel with an area of 1 square meter. Finally, it is important to note that while the solar panel weight is an ...



### [Module Mounting Structure Design Calculation, PDF, Solar Panel](#)

The STAAD Pro Software calculates the weight of the structure internally since density for Various materials used and acceleration due to gravity has been given as an input.



### [How to calculate the weight of materials used in photovoltaic panels](#)

How to calculate the solar panel weight. The solar panel weights varies depending on the material, size, bezel material, etc. Solar panel weight is mainly composed of solar panels, frames, and mounting structures.



### [Solar Panel Size and Weight](#)

The size and weight of solar panels are critical considerations when it comes to choosing the perfect fit for your energy needs. Whether you opt for smaller, lightweight panels, or larger, heavier ones, Peninsula Solar is ...



### [average photovoltaic solar panel weight guide](#)

Generally, standard residential photovoltaic panels weigh between 40 and 50 pounds (about 18 to 22 kilograms). This weight makes them manageable, but still requires careful lifting during installation. Why ...



### [How to calculate the quantity of C](#)

Based on the panel dimensions and load requirements, determine the appropriate spacing between the C - Purlin. For most standard solar panels, a spacing of 1 - 1.5 meters between purlins is ...



### [Photovoltaic Purlins Profile Steel](#)

Lightweight: Aluminum purlins are approximately one-third the weight of steel, making them easier to handle, transport, and install. This can be a critical factor for rooftop projects where adding excessive weight to the ...



### [What Is A Purlin in Solar?](#)

The spacing between purlins is an important consideration in solar panel mounting systems. The spacing will depend on a number of factors, including the weight of the solar panels, the size of the roof, and ...



## Contact Us

---

For catalog requests, pricing, or partnerships, please visit:  
<https://www.motocykle3city.pl>