

Pipe Pile Photovoltaic Panel Installation Specification Requirements

LiFePO₄ Battery,safety

Wide temperature: -20~55°C

Modular design, easy to expand

Wall-Mounted&Floor-Mounted

Intelligent BMS

Cycle Life: ≥ 6000

Warranty:10 years



Overview

The RERH specifications and checklists take a builder and a project design team through the steps of assessing a home's solar resource potential and defining the minimum structural and system components needed to support a solar energy system. The Renewable Energy Ready Home (RERH) specifications were developed by the U. Environmental Protection Agency (EPA) to assist builders in designing and constructing homes equipped with a set of features that make the installation of solar energy systems after the completion of the home's. This guide is tailored for pile driving contractors and engineers involved in solar farm projects—providing an in-depth exploration of the techniques, materials, and challenges associated with pile driving in this growing sector. Alignment is crucial; maintaining proper alignment of the piles is a meters of screw piles through in situ tests and simulation methods to operate the smallest grid-tied solar solar farm is another critical factor in selecting the. Meta Description: Discover critical steel pipe pile photovoltaic support specification requirements for solar projects. Learn about material standards, load calculations, and compliance updates in 2023. You know, over 37% of solar farm delays in 2022 stemmed from non-compliant support structures. And, large-scale solar farms can have hundreds of thousands of piles to be driven. Driven piles are an attractive foundation alternative for ground mount solar panel systems since the materials are readily a screw piles through in situ tes ten composed of durable.

Pipe Pile Photovoltaic Panel Installation Specification Requirements



[Pipe Pile Photovoltaic Support Installation: The Future of Solar](#)

As solar farms creep into more "interesting" geological locations, pipe pile photovoltaic support installation is becoming less of an option and more of a survival skill. The question isn't whether to ...

[Contact our support team. We're here to help!](#)

Got questions about non-dilutive financing from the modern capital platform? Reach out to the Pipe support team any time!



[Pipe , Embedded Financial Solutions](#)

Pipe Joins the World Economic Forum's Unicorn Community Read more Pipe Joins the World Economic Forum's Unicorn Community Read more



[Photovoltaic support installation cast-in-place piles](#)

Are solar farms a good market for Pile Driving Contractors? As the demand for renewable energy increases--solar farms are becoming an ideal market for pile driving contractors due to the need for ...

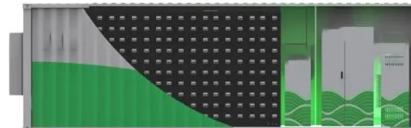


[Pipe Capital . Working Capital that actually works.](#)

Pipe has three integration options: Pipe-hosted, Embedded UI, and Capital API, ranging from a fast, no-code solution to a deep API integration for a fully customized customer journey.

[Pipe Pile Photovoltaic Panel Installation Specification Requirements](#)

Builders that intend to meet both the solar PV and solar water heating RERH specifications should detail the location and the square footage of the roof area to accommodate both technologies.



[Come help us change the future of financing. See open jobs.](#)

Pipe has been named an American Banker Best Place to Work in Fintech two years in a row. Our team is changing the way companies finance growth. Come join us!

[Solar Photovoltaic: SPECIFICATION, CHECKLIST AND GUIDE](#)

By following the specification, a builder should feel confident that the proposed array location on a home, built to the RERH specification, will provide a suitable installation environment for a fully operational ...



[Steel Pipe Pile Photovoltaic Support Specifications: The 2023 ...](#)

Meta Description: Discover critical steel pipe pile photovoltaic support specification requirements for solar projects. Learn about material standards, load calculations, and compliance ...

[Prefabricated pipe pile photovoltaic support installation diagram](#)

The pile-column structure of the bridge can be completed by prefabricated pile foundation, pier, and cap beam based on the integral assembly installation method.



[Foundations of Solar Farms: Choosing the Right Piles and Installation](#)

Projects requiring high load capacities--such as those with large, heavy solar panels or in regions with significant wind forces--may necessitate the use of concrete or composite piles. ...

[Something Went Wrong , Pipe](#)

Get up to the full annual value of your booked monthly and quarterly subscriptions. Scale your business without dilution or debt.

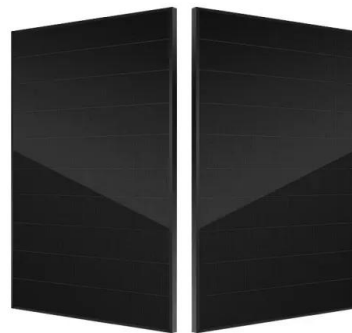


Grow on your terms , Pipe

Pipe makes customer-friendly capital and smart financial tools accessible to growing businesses inside the software they use every day. Our embedded solutions are built to scale and ...

[Photovoltaic pile support installation specifications](#)

The Installation Process. The installation of a solar carport is a systematic process that involves constructing the support structure, installing the photovoltaic panels, and



[Steel pipe pile photovoltaic support specification requirements](#)

ASTM A252 is the standard specification for steel pipe piles used in construction. These pipe piles are used as load-bearing piles in deep foundation applications or as casing in drilled shafts for ...

[Construction plan for photovoltaic panel steel pipe piles](#)

By understanding the differences between open-end and closed-end pipe piles, you can make an informed decision that will contribute to the stability and longevity of your construction project.



[Resources , Articles and news on the future of embedded finance](#)

Pipe makes customer-friendly capital & smart financial tools accessible to growing businesses inside the software they use every day. Our embedded solutions are built to scale and ...



114KWh ESS



[Pipe Announces New Integration With Uber, Empowering Restaurants ...](#)

Uber selected Pipe for its merchant-friendly solution that provides capital offers that are designed specifically for small businesses, with a multi-draw advance, transparent terms, and flexible ...

↑ ESS



Help Center , Pipe

Pipe has three integration options: Pipe-hosted, Embedded UI, and APIs, ranging from a fast, no-code solution to a deep API integration for a fully customized customer journey.

Contact Us

For catalog requests, pricing, or partnerships, please visit:
<https://www.motocykle3city.pl>