

Photovoltaic panel internal working principle diagram

GRADE A BATTERY

LiFePO₄ battery will not burn when overcharged, over discharged, overcurrent or short circuit and can withstand high temperatures without decomposition.



Overview

With this article, we will provide an illustrated diagram that explains exactly how solar panels generate clean energy from sunlight. We'll break down all of the components of a typical system and explain each step in easy-to-understand language. **Solar Cell Definition:** A solar cell (also known as a photovoltaic cell) is an electrical device that transforms light energy directly into electrical energy using the photovoltaic effect. **Working Principle:** The working of solar cells involves light photons creating electron-hole pairs at the p-n. I'm going to use some solar panel diagrams to show you how solar cells work and then describe all of the elements that go up to make a complete home solar system. **Construction:** Made of silicon with metal contacts and an anti-reflective coating. The sun's energy is absorbed by PV cells, which creates electrical charges that move in a current.

Photovoltaic panel internal working principle diagram



[Solar Panel Diagram and Its Components Explained](#)

Focus on the following components when analyzing a photovoltaic module: the photovoltaic cells, the protective glass, and the backsheet. The cells convert light into electrical energy through the ...

[how solar panels work diagram : a simple visual guide](#)

Discover how solar panels work with a simple visual guide. Clear diagrams make understanding solar energy easy for everyone.



[Operational principle diagram of photovoltaic panels](#)

Photovoltaic Cell Working Principle. A photovoltaic cell works on the same principle as that of the diode, which is to allow the flow of electric current to flow in a single

[The Ultimate Guide To How Solar Panels Work: An Illustrated ...](#)

With this article, we will provide an illustrated diagram that explains exactly how solar panels generate clean energy from sunlight. We'll break down all of the components of a typical ...



Solar Panel Diagrams

When photons from the sun hit the silicon discs, they impart energy to the electrons in the P-type silicon, enabling them to move into the N-type layer. This movement of electrons creates an ...



[Solar Cell - Working Principle, Diagram, Efficiency & Applications](#)

Learn about solar cells: definition, working principle, construction, diagram, efficiency factors, and applications in renewable energy and photovoltaics. Includes working model and symbol.



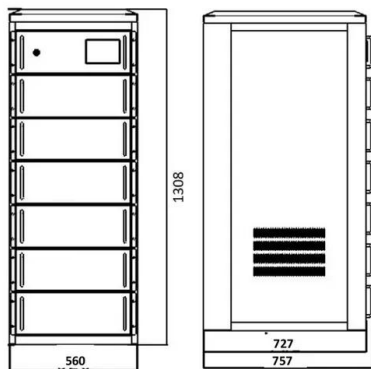
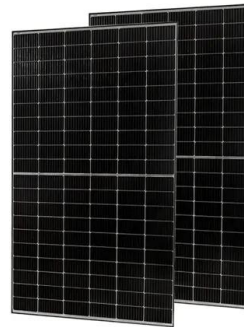
[How Do Solar Panels Work? Diagram & Step by Step](#)

Discover how solar panels work with a diagram and step by step breakdown with EvoEnergy. The UK's leading commercial renewable energy company.



[Solar Cell: Working Principle & Construction \(Diagrams Included\)](#)

A solar cell (also known as a photovoltaic cell or PV cell) is defined as an electrical device that converts light energy into electrical energy through the photovoltaic effect.



[How Do Solar Panels Work? \(Details Explained + Diagrams\)](#)

Solar panels work by converting the light radiation from the sun to Direct Current (DC) electricity through a reaction inside the silicon layers of the solar panel.

[The Ultimate Solar Panel System Schematic Diagram: A ...](#)

Discover the components and layout of a solar panel system through a detailed schematic diagram. Learn how solar panels, inverters, batteries, and other essential components work together to ...



Contact Us

For catalog requests, pricing, or partnerships, please visit:
<https://www.motocykle3city.pl>