

Overview

This step-by-step guide covers the complete wiring process from pre-installation planning through final testing. You'll learn conductor sizing calculations per NEC 690. A PV combiner box or DC combiner box acts as a central hub, combining the direct current (DC) from multiple strings into a single, organized output safely fed to your inverter. Without it, wiring becomes tangled, voltage drops occur, maintenance costs rise, and safety risks increase. This device plays a significant role in both residential and commercial solar installations, particularly when. Wiring a PV combiner box correctly requires precise conductor sizing, proper torque application, and strict NEC 690. Practical applications are used to illustrate how to avoid common mistakes. This makes it easier and less chaotic when you're running wires down to the inverter or charge controller.

PV combiner box address setting

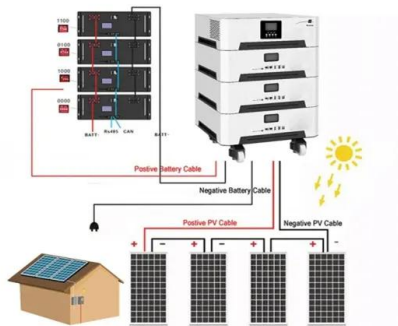


[How to install a combiner box properly?](#)

Before you start the installation process, choosing the right location for the combiner box is essential. The site should meet the following criteria: Accessibility: Ensure that the combiner box is ...

[How to Connect a PV Combiner Box?., Power Home](#)

This blog begins with the structure of a PV combiner box, progressively explaining the wiring methods for PV arrays, the connection sequence of DC protection devices, and grounding ...



[A Step-by-Step Guide to Installing a Combiner Box in a Solar](#)

By following these step-by-step instructions, you can effectively install a combiner box in a solar photovoltaic system, ensuring the efficiency, safety, and reliability of the installation.

[How to Install a Solar Combiner Box?](#)

In photovoltaic power generation systems, the correct installation of solar combiner boxes is the critical foundation for ensuring long-term stable system operation and investment returns.



[The Ultimate Guide to Solar Combiner Boxes: From Basics to ...](#)

Explore the comprehensive guide to PV Solar Combiner Boxes: Learn about types, components, selection criteria, installation best practices, maintenance, and advanced technologies. ...



51.2V 150AH, 7.68KWH

[How To Wire A Solar Combiner Box Or Pass-Through Box?](#)

Mount the pass-through box securely: Your box should be rated for outdoor conditions--NEMA 3 or NEMA 4 if it's outside. Run your solar PV wire into the box: Use appropriately sized holes and strain ...



[SolarEdge Combiner Box Installation and Connection](#)

Switch off the inverter ON/OFF/P switch and the DC safety switch. Switch off AC to the inverter on the main service panel. Make sure the PV voltage is lower than 30V. Toggle off the battery ON/OFF/P ...



[How to Connect Solar Panels to a Combiner Box: A Step-by-Step Guide](#)

Connecting solar panels to a combiner box is a crucial step in setting up a solar power system. This process consolidates multiple strings of solar panels into a single output, simplifying the ...



[How to Wire a PV Combiner Box: Professional Installation Guide ...](#)

Meta Description: Learn how to wire a pv combiner box with proper torque specs, conductor sizing, and grounding. Complete installation guide with NEC 690.15 compliance and ...

[Solar Combiner Box Installation and Wiring Diagram](#)

Learn how to safely install and wire a solar combiner box for DC PV systems. Step-by-step guide covers wiring, grounding, surge protection (SPD), and best practices for solar panel arrays.



Contact Us

For catalog requests, pricing, or partnerships, please visit:
<https://www.motocykle3city.pl>