

Off-grid inverter working mode



Overview

There are several common working modes for off grid power inverter, such as PV priority, mains priority, battery priority, energy saving mode, and batteryless operation mode. Modern off-grid inverters typically provide three main working modes: 1. PV Priority Mode In this mode, the inverter gives priority to solar power to. This article will help you have a clear understanding of the working modes of off-grid inverters and choose the right off-grid inverter based on your specific use scenarios. By following the guide below, the user can easily set the station's needs depending on th ill operate in a pre-set priority system. It also needs to be equipped with energy storage batteries to store the electricity generated by solar panels so that it can continue to supply power to the.

Off-grid inverter working mode



[How to Choose the Working Mode of The Off Grid Inverter? - ...](#)

Understanding the different working modes of these inverters is crucial to ensuring optimal performance and efficiency for your off grid solar system. In this article, we will explore the ...

[Off Grid Inverter Basics: Classification and Working ...](#)

Off-grid inverters work on the principle of power electronics, where DC power is converted into AC power by means of an internal electronic circuit.



[EG4® 6000XP MONITOR SYSTEM WORKING MODE](#)

Bypass Mode Grid power will carry the load demand, while solar energy is directed towards the charging of the battery.

[Understanding Off-Grid Inverters and How to Choose the Right One](#)

This article will help you have a clear understanding of the working modes of off-grid inverters and choose the right off-grid inverter based on your specific use scenarios.



[How Many Working Modes Does Off Grid Power Inverter Have?](#)

There are several common working modes for off grid power inverter, such as PV priority, mains priority, battery priority, energy saving mode, and batteryless operation mode.



Deye Official Store

10 years warranty

[How to Choose the Working Mode of The Off Grid Inverter](#)

Choosing the appropriate working mode for an off-grid inverter depends on various factors such as electricity availability, cost of mains power, and specific power requirements.



[How to Choose the Working Mode of The Off Grid Inverter](#)

PV Priority Mode
Grid Priority Power Consumption Mode
Battery Priority Mode
Four Battery Charging Modes
Working principle: In PV priority mode, photovoltaic power is given priority to power the load. If the PV power is insufficient to meet the load demand, the energy storage battery and PV together supply power to the load. When there is no PV power or the battery is insufficient, the inverter automatically switches to mains power if it detects its a See more on inverter EG4



Electronics[PDF]

EG4® 6000XP MONITOR SYSTEM WORKING MODE

Bypass Mode Grid power will carry the load demand, while solar energy is directed towards the charging of the battery.

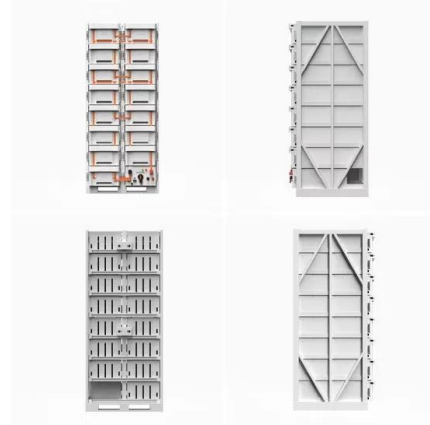
[Off Grid Solar Inverters: Complete 2025 Buyer's Guide & Installation Tips](#)

Complete guide to off-grid solar inverters. Compare top brands, sizing guides, installation tips, and expert recommendations for 2025. Get reliable off-grid power.



[How to Select the Right Working Mode for an Off-Grid ...](#)

Learn how to choose the right inverter mode for an off-grid solar system, including PV priority, and battery priority options.

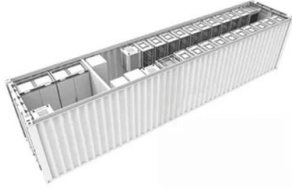


[General introduction of working mode](#)

The G4 energy storage inverter has 7 working modes and two sets of flexible time axes. Except for EPS, the inverter automatically enters according to the working conditions, and other modes need to be ...



[Residential Inverter Systems](#)



Grid Sell System Work Mode. The inverter can monitor how much DC PV is produced, how much PV is being pushed out of the Sol-Ark GRID terminal, and any appliances that are connected to the Sol-Ark ...

Contact Us

For catalog requests, pricing, or partnerships, please visit:
<https://www.motocycle3city.pl>