

Innovation in wind and solar complementary maintenance of communication base stations



Overview

Hybrid energy solutions enable telecom base stations to run primarily on renewable energy sources, like solar and wind, with the diesel generator as a last resort. This reduces emissions, aligns with sustainability goals, and even opens up opportunities for carbon credits or green. In this embodiment, the solar power generation equipment and the wind power generation equipment are used to complement each other to provide stable power for the communication. We investigate the use of wind turbine-mounted base stations (WTBSs) as a cost-effective solution for regions with. Ranking of domestic global communication base station wind and solar complementary technology Ranking of domestic global communication base station wind and solar complementary technology Can solar power improve China's base station infrastructure?

Traditionally powered by coal- dominated grid. Service life of wind and complementary solar commun ing a global power system dominated by solar and wind energy presents immense challenges. Here,we demonstrate the p tentialof a globally interconnecte ability, accessibility, and interconnectability, as elaborated in Supplementary Table S3. Wind-solar complementary power system, is a set of power generation application system, the system is using solar cell square, wind turbine (converting AC.

Innovation in wind and solar complementary maintenance of comm



[Operating communication base stations with wind and solar power](#)

Discover how hybrid energy systems, combining solar, wind, and battery storage, are transforming telecom base station power, reducing costs, and boosting sustainability. Due to the increased awareness of environmental ...

[Ranking of domestic global communication base station wind and ...](#)

By integrating renewable sources such as solar and wind energy with Low-carbon upgrading to China's communications base stations Sep 1, & #;& #;& #;As China rapidly expands its digital infrastructure, ...



[What are the functions of wind and solar complementary ...](#)

In summary, solar power supply systems for communication base stations are playing an increasingly important role in the field of power communication with their unique advantages.



[The Importance of Renewable Energy for Telecommunications Base Stations](#)

In this paper we assess the benefits of adopting renewable energy resources to make telecommunications network greener and cost-efficient, tackling "3E" combination-energy security, ...



[The complementary role of wind and solar in communication base ...](#)

Hybrid energy solutions enable telecom base stations to run primarily on renewable energy sources, like solar and wind, with the diesel generator as a last resort. This reduces emissions, aligns with sustainability goals, ...



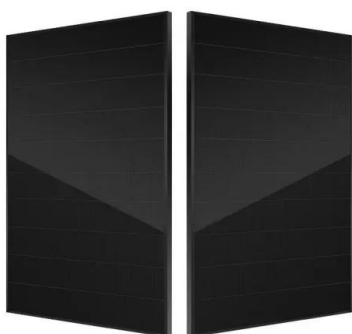
[Deployment of communication base stations and wind-solar ...](#)

Let's explore how solar energy is reshaping the way we power our communication networks and how it can make these stations greener, smarter, and more self-sufficient.



[Building wind and solar complementary communication base ...](#)

In today's 5G era, the energy efficiency (EE) of cellular base stations is crucial for sustainable communication. Recognizing this, Mobile Network Operators are actively prioritizing EE for



[Service life of wind and complementary solar communication ...](#)

A globally interconnected solar-wind power system can meet future electricity demand while lowering costs, enhancing resilience, and supporting a stable, sustainable



[A review of hybrid renewable energy systems: Solar and wind-powered](#)

Research, investment, and policy pivotal for future energy demands. The review comprehensively examines hybrid renewable energy systems that combine solar and wind energy technologies, focusing on ...



[The Importance of Renewable Energy for ...](#)

In this paper we assess the benefits of adopting renewable energy resources to make telecommunications network greener and cost-efficient, ...



[Communication base station wind and solar complementary battery](#)

Communication base station stand-by power supply system The invention relates to a communication base station stand-by power supply system based on an activation-type cell and a wind-solar complementary ...



Contact Us

For catalog requests, pricing, or partnerships, please visit:
<https://www.motocykle3city.pl>