

If the photovoltaic bracket is fixed



Overview

Fixed photovoltaic brackets do not rotate with the changing angle of solar incidence but receive solar radiation in a fixed manner. They are categorized based on the set tilt angle into: optimal tilt fixed type, adjustable tilt fixed type, and sloped roof fixed type. They are designed to hold solar panels in a stationary position, providing a stable and reliable support structure. When designing a fixed photovoltaic bracket, it is necessary to refer to the local geographical location, environment, climate and other. A PV bracket is a support structure that arranges and fixes the spacing of PV modules in a certain orientation and angle according to the specific geographic location, climate, and solar resource conditions of the PV power generation system construction. Optimal Tilt Fixed Type: The.

If the photovoltaic bracket is fixed



[How to choose between photovoltaic intelligent tracking bracket and](#)

In terms of power station investment, we should consider the cost and benefit factors of the power station, whether to choose photovoltaic intelligent tracking bracket or fixed bracket.

[When should I choose a fixed photovoltaic bracket?](#)

When properly installed at the correct angle, fixed photovoltaic brackets can provide high energy efficiency. By positioning the solar panels to face the sun at an optimal angle, the panels can capture ...



[Basic knowledge of photovoltaic fixed bracket](#)

In order to achieve the effective use of resources and the maximum conversion rate of photovoltaic energy, this project designs a fixed adjustable photovoltaic bracket

[What Is A Fixed Photovoltaic Bracket?](#)

Whether it is a rainy summer or a cold winter, the fixed bracket can reliably support the photovoltaic modules and reduce the risk of module damage caused by the shaking of the bracket.



[How to choose between photovoltaic intelligent tracking ...](#)

In terms of power station investment, we should consider the cost ...



[Classification And Design Of Fixed Photovoltaic Mounts](#)

PV brackets can be divided into three types: fixed, tilt-adjustable, and auto-tracking type, and its connection method generally has two forms of welding and assembly. Among them, fixed ...



GRADE A BATTERY

LiFePO4 battery will not burn when overcharged over discharged, overcurrent or short circuit and can withstand high temperatures without decomposition.

[Get to know photovoltaic brackets](#)

The product quality, structural design, and layout of photovoltaic brackets directly affect the power generation efficiency, operation safety, and service life of photovoltaic power stations.



[How to Choose Photovoltaic Brackets?](#)

Based on terrain and geological conditions, they can be divided into fixed brackets and tracking brackets. Fixed brackets have a simple structure and low cost, making them suitable for flat ...

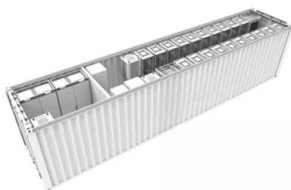


[Fixed and Tracking PV Mounting Systems](#)

Fixed and tracking PV mounting systems explained: from basic fixed-rail to single-axis trackers, tailored for rooftop and ground solar brackets.

[Performance and Features of Fixed Photovoltaic Brackets](#)

Fixed photovoltaic brackets do not rotate with the changing angle of solar incidence but receive solar radiation in a fixed manner. They are categorized based on the set tilt angle into: ...



[What is the difference between fixed and adjustable photovoltaic ...](#)

In this blog post, we'll delve into the differences between fixed and adjustable photovoltaic brackets, helping you make an informed decision for your solar project.

Contact Us

For catalog requests, pricing, or partnerships, please visit:
<https://www.motocykle3city.pl>