

How much loss does wind power generation cause



Overview

When wind power is generated, it will displace generation from power plants, reducing their fuel use and emissions of CO₂, NO_x, SO_x, and particulates. It can also increase electrification and thus decrease emissions in transport, heating and industry energy use. [2] Wind turbines have some of the lowest global warming potential per unit of electricity generated: far less greenhouse gas is emitted than for the average unit of electricity. Harnessing power from the wind is one of the cleanest and most sustainable ways to generate electricity as it produces no toxic pollution or global warming emissions. Wind is also abundant, inexhaustible, and affordable, which makes it a viable and large-scale alternative to fossil fuels. Despite. Research led by David Keith finds wind farms cause more environmental impact than previously thought SEAS Communications By Leah Burrows, SEAS Communications When it comes to energy production, there's no such thing as a free lunch, unfortunately. As the world begins its large-scale transition. When WFDTs have been used to predict the output of a wind farm, it is necessary to estimate or calculate a range of potential sources of energy loss.

How much loss does wind power generation cause



Wind Energy Factsheet

Wind supplies 57% of Denmark's electricity generation and over 20% in ten other countries. 7 Global wind additions reached a record 117 GW in 2023. 7 In 2024, onshore installations surpassed 100 GW ...

Assessing the Environmental and Economic Impacts of Wind Turbines

Research by Harvard University found that transitioning to wind power in the U.S. would require five to 20 times more land than previously thought, potentially warming average surface ...



How Is Wind Power Bad for the Environment? - The Institute for

While widely lauded as a clean energy source, wind power isn't without environmental drawbacks. Its impact, though generally less severe than fossil fuels, stems primarily from habitat ...

Environmental impact of wind power

Overview
 Basic operational considerations
 Ecology
 Impacts on people
 Offshore
 See also
 External links

The environmental impact of electricity generation from wind power is minor when

compared to that of fossil fuel power. Wind turbines have some of the lowest global warming potential per unit of electricity generated: far less greenhouse gas is emitted than for the average unit of electricity, so wind power helps limit climate change. Wind power consumes no fuel, and emits no air pollution, unlike fossil fuel power sources. ...

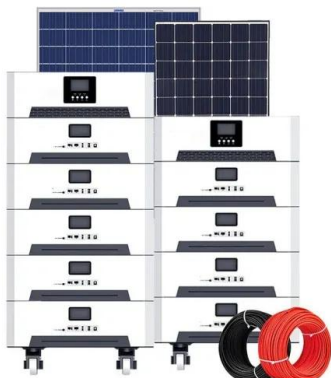


[Wind Farm Energy Loss Factors](#)

There is considered to be six main sources of energy loss for wind farms, each of which may be subdivided into more detailed loss factors: curtailments. A rather comprehensive list of potential ...

[EMISSION IMPACTS OF WIND POWER](#)

When wind power is generated, it will displace generation from power plants, reducing their fuel use and emissions of CO₂, NO_x, SO_x, and particulates. It can also increase electrification and thus decrease ...



[Environmental Impacts of Wind Power](#)

A recent National Wind Coordinating Committee (NWCC) review of peer-reviewed research found evidence of bird and bat deaths from collisions with wind turbines and due to ...

Wind energy and the environment

Wind turbines do not release emissions that can pollute the air or water (with rare exceptions), and they do not require water for cooling. Wind turbines may also reduce electricity ...



Outdoor Cabinet BESS
50 kWh/500 kWh Battery Storage System
Industrial and Commercial Energy Storage

- All In One**
Integrating battery packs
- High-capacity**
50-500kWh
- Degree of Protection**
IP54
- Operating Temperature Range**
-20-60°C (Derating above 50 °C)
- Intelligent Integration**
Integrated photovoltaic storage cabinet
- Rated AC Power**
50-100kW
- Altitude**
3000m (>3000m derating)

The Down Side to Wind Power

"For wind, we found that the average power density -- meaning the rate of energy generation divided by the encompassing area of the wind plant -- was up to 100 times lower than ...

Environmental impact of wind power

A study by the US National Renewable Energy Laboratory of US wind farms built between 2000 and 2009 found that, on average, 1.1 percent of the total wind farm area suffered surface disturbance, ...



- LIQUID/AIR COOLING
- INTELLIGENT INTEGRATION
- PROTECTION IP54/IP55
- BATTERY /6000 CYCLES



Wind Turbine Generator Breakdown: Impact and Solutions

When a wind turbine generator breaks down, I'm hit with a double whammy of financial losses and environmental consequences, as the sudden loss of power generation leads to a surge in ...

Contact Us

For catalog requests, pricing, or partnerships, please visit:
<https://www.motocykle3city.pl>