

How big of an inverter and battery should I use for a 2500w solar panel



Overview

Your inverter and battery must work seamlessly together. Pairing a right size capacity battery for an inverter can be a bit confusing for most the beginners So I have made it easy for you, use the calculator below to calculate the battery size for 200 watt, 300 watt, 500 watt, 1000 watt, 2000 watt, 3000 watt, 5000-watt inverter Failed to calculate field. Most people, especially beginners, make mistakes here. Either they have to live with limitations on using electronics, or they waste a lot of energy. At LuxpowerTek, we have developed. Determining the right sizes for solar panels, batteries, and inverters is essential for an efficient and reliable solar energy system.

How big of an inverter and battery should I use for a 2500w solar panel



[Calculate Battery Size For Any Size Inverter \(Using Our Calculator\)](#)

To recharge your battery from time to time you would need the right size solar panel to do the job! Read the below article to find out the suitable solar panel size for your battery bank

[Solar Inverter Sizing Guide: How to Size Your Inverter](#)

Choosing the right solar inverter size can make or break your solar investment. Get it wrong, and you'll either waste money on oversized equipment or lose precious energy production. ...

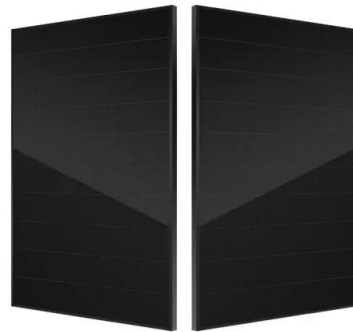


[How to Calculate Solar Panel, Battery, and Inverter Size](#)

By accurately calculating your energy needs, desired backup time, and considering factors like system efficiency and future expansion, you can determine the appropriate sizes for your ...

[How to Choose the Right Size Solar Inverter: Step-by-Step with Real](#)

This guide walks you through calculating inverter size based on panel capacity, power usage, and safety margins. We use real examples from installations in Texas and Queensland to ...



[The Only Inverter Size Chart You'll Ever Need](#)

We created a comprehensive inverter size chart to help you select the correct inverter to power your appliances. The need for an inverter size chart first became apparent when researching ...



[Choosing and Sizing Batteries, Charge Controllers and Inverters for](#)

In general the system should be big enough to supply all your energy needs for a few cloudy days but still small enough to be charged by your solar panels. Here are the steps to sizing your system.



[Determining the Solar and Inverter Size Needed to Charge a Battery](#)

This guide will walk you through everything you need to know to calculate the optimal Size of your solar and inverter setup to charge batteries effectively and safely.



[2500 Watt Solar Panel Kit: Complete 2025 Buyer's Guide & Reviews](#)

For a 2500W system, plan for 400-600Ah of battery capacity at your system voltage to provide adequate storage for 1-2 days of autonomy. A pure sine wave inverter rated at 2500-3000W ...



[Battery and Inverter Sizing Guide 2025: How to Match Solar ...](#)

Learn how to size and pair a battery with your solar inverter in 2025. Discover key ratios, examples, and Growatt solutions for optimal solar + storage system design.

[Solar Inverter & Battery Sizing Calculator](#)

Choosing the correct inverter and battery size is crucial for every microgrid system. Our Solar Inverter and Battery Sizing Calculator provides a simple and user-friendly solution.



Contact Us

For catalog requests, pricing, or partnerships, please visit:
<https://www.motocykle3city.pl>