

How big is an 800w photovoltaic panel



Overview

But what exactly determines their size, and how do they compare to lower-wattage alternatives?

"An 800W panel typically measures 2.1m – about 25% larger than a standard 400W residential panel, but delivers double the power output. These panels are particularly popular in commercial and industrial installations where space optimization and energy output are critical. However, many questions might come to your mind when building your system. What inverter size could I use for the 800w solar array?

How many batteries do I need for. How much solar do you need to offset your entire electrical usage?

The answer is: it depends on how much electricity you use and the average sun hours in your area. But as a rule of thumb, you'll need about 800 watts of solar panels to cover 100% of your energy usage. Here's the key distinction every homeowner should understand: Most residential solar panels in 2025 come in three main configurations: The most common choice for. Standard residential solar panels are typically around 5.

How big is an 800w photovoltaic panel

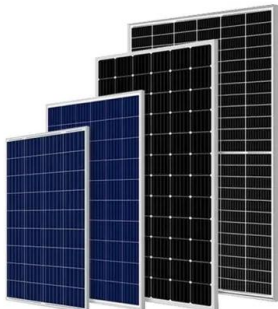


[Solar Panel Size & Dimensions Guide 2025. Complete Specs](#)

In this comprehensive guide, you'll learn everything you need to know about solar panel sizing, from standard dimensions to weight considerations, helping you determine the perfect solar ...

[Solar Panels 410W-800W Selection Guide](#)

Modules around 410W or 450W are generally suitable for smaller roofs, while 600W or 700W panels are typically used on larger roof areas. Selecting the right wattage between 410W and 800W ensures ...



800 Watt Solar Panels

The quantity of electricity that can be produced depends on the size of the inverter, and the 800-watt system can produce a sizable amount of power. A 1,000-1,600 watt inverter is the ...

[What Can 800 Watt Solar Panel Power? \(With FAQs\)](#)

The answer is: it depends on how much electricity you use and the average sun hours in your area. But as a rule of thumb, you'll need about 800 watts of solar panels to cover 100% of your ...



[The Ultimate Guide to Solar Panel Size, Weight & Wattage \(2025\)](#)

Standard residential solar panels are typically around 5.8 feet long by 3.5 feet wide and weigh between 40 to 50 pounds. However, the exact dimensions depend heavily on the panel's ...



[Standard Solar Panel Sizes And Wattages \(100W-500W Dimensions\)](#)

The goal here is to get to the average solar panel size by wattage. You can find typical dimensions of 100W, 150W, 170W, 200W, 200W, 220W, 300W, 350W, 400W, and 500W solar panels summarized ...



[Understanding 800W Photovoltaic Panel Size: A Comprehensive ...](#)

"An 800W panel typically measures 2.2m x 1.1m - about 25% larger than a standard 400W residential panel, but delivers double the power output." Industry Data: 800W Panel Specifications vs Competitors



[800 Watt Solar System \(Full Guide, Sizing, Calculator\)](#)

The answer is: it depends on how much electricity you use and the average sun hours in your area. But as a rule of thumb, you'll need about 800 ...



[Solar Panel Size and Wattage Chart: Standard Sizes & Uses for Each](#)

Using a solar panel size chart can help you choose the best types of solar panels for your home or application. Because the size of a standard solar panel can vary, a chart that outlines the ...

MPPT Calculator

Use our Online MPPT Calculator for PV sizing calculations.



[800 Watt Solar System \(Full Guide, Sizing, Calculator\)](#)

The 800-watt solar power system is one of the best solutions to utilize solar power in running some devices during the day and night. However, many questions might come to your mind ...

Contact Us

For catalog requests, pricing, or partnerships, please visit:
<https://www.motocykle3city.pl>