

# Electricity introduction scheme for solar telecom integrated cabinets



## Overview

---

Solar Module integration enables 5G telecom cabinets to cut grid electricity costs by up to 30% through on-site renewable generation, hybrid energy management, and advanced storage. Operators experience lower operating expenses, less diesel use, and improved reliability. The following data. th their business needs. As Architects of Continuity™, Vertiv solves the most important challenges facing today's data centers, communication networks and commercial and industrial facilities with a portfolio of power, cooling and IT infrastructure solutions and services that extends from the. The communication base station installs solar panels outdoors, and adds MPPT solar controllers and other equipment in the computer room. The power generated by solar energy is used by the DC load of the base station computer room, and the insufficient power is supplemented by energy storage. Integrates solar input, battery storage, and AC output in a compact single cabinet. Offers continuous power supply to communication base stations—even during outages.

## Electricity introduction scheme for solar telecom integrated cabinet

---



### [Green Power Solutions for 5G Telecom Cabinets: How Solar Modules ...](#)

Solar Module integration enables 5G telecom cabinets to cut grid electricity costs by up to 30% through on-site renewable generation, hybrid energy management, and advanced storage.

### [Smart Power Cabinet Solutions , PDF , Electrical Grid](#)

The Shoto smart power cabinet is a turnkey solution for powering communication base stations. It integrates multiple energy sources like solar, wind, grid, and batteries into a hybrid system. The ...



### **Emergency Power System**

During the installation of this product, you will be exposed to wires from the Solar PhotoVoltaic (PV) panel array which are energized with high voltage. The high voltage is present during all daylight hours.



### [Why Indoor Photovoltaic Energy Cabinets Powering the Future of ...](#)

Over 75% of the new telecom infrastructure investments in Asia and Africa today include solar energy components, as indicated by a 2024 GSMA report. And over 30% of them are designed ...



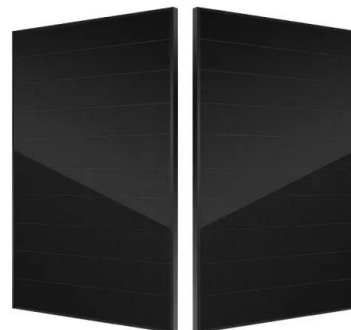
### **For Telecom Applications**

Off-Grid Solar Solution Vertiv's off-grid solar solution offers a complete energy portfolio that provides reliable and efficient telecom service, supporting remote areas where grid access is not feasible and ...



### Telecom Base Station PV Power Generation System Solution

The communication base station installs solar panels outdoors, and adds MPPT solar controllers and other equipment in the computer room. The power generated by solar energy is used by the DC load ...



### Solar Energy Solutions for Telecom

The NetSure™ M620HC enclosure is a robust energy storage solution for off-grid CDC (charge-discharge-charge) or bad-grid applications with optional supplemental solar power.



### Indoor Photovoltaic Telecom Energy Cabinet

The table below consolidates key specs for LZY Energy Indoor Photovoltaic Energy Cabinet models. Indoor, floor-standing models all feature AC output, photovoltaic input, and energy storage functionality.



### NEMA Enclosures & Integrated Solutions

Whether for remote telecom stations, solar hybrid systems, or industrial automation units, we provide fully assembled cabinets with integrated power, cooling, and control systems for plug-and-play ...

### Understanding PV Panels for ESTEL Telecom Cabinet Applications

In ESTEL telecom cabinet applications, solar panels deliver consistent renewable energy, supporting the essential operation of telecom towers and power cabinet equipment. Reliable solar ...



## Contact Us

For catalog requests, pricing, or partnerships, please visit:  
<https://www.motocycle3city.pl>