

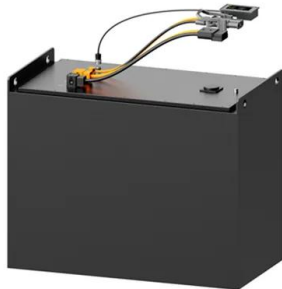
Columbia Power Station Emergency Generator



Overview

Columbia Generating Station is a nuclear commercial energy facility located on the, 10 miles (16 km) north of . It is owned and operated by, a Washington state, not-for-profit joint operating agency. Licensed by the in 1983, Columbia first produced electricity in May 1984, and entered commercial operation in December 1984.

Columbia Power Station Emergency Generator



[Columbia Generating Station, Summary of Changes and Analysis ...](#)

Columbia Generating Station started testing a response method known as All Call, All Come, in July 2023 and added the method into station procedures in April of 2024.

[Columbia Generating Station , EFSEC](#)

The Columbia Generating Station (CGS), formerly known as WNP-2, is an operating nuclear electric generating station located near Richland. The project is sited on land leased from the U.S. ...

Utility-Scale ESS solutions



[Columbia Generating Station , Nuclear Power Plant in Richland, WA](#)

View the monthly generation and consumption, generator details, and more for Columbia Generating Station.

PUSUNG-R (Fit for 19 inch cabinet)



[Columbia Generating Station](#)

The Columbia Generation Station, or CGS, is a 1,207 gross MW boiling water nuclear reactor located in Richland, Washington. It began commercial operations in December 1984 and is ...



[Columbia Generating Station nuclear power plant shuts down , Tri-City](#)

The heat produced by a chain reaction boils the water within the core, creating steam that turns turbines attached to an electricity generator. Typically the outage starts about a week into May.



[Energy Northwest's Columbia Generating Station Reconnects with...](#)

Columbia Generating Station successfully reconnected to the Pacific Northwest's power grid on June 16 completing its biennial refueling outage, Energy Northwest reported.



[Columbia Generating Station](#)

Columbia Generating Station is a nuclear commercial energy facility located on the Hanford Site, 10 miles (16 km) north of Richland, Washington. It is owned and operated by Energy Northwest, a ...



[Columbia Generating Station , Nuclear Power for a Carbon-Free Future](#)

Columbia Generating Station is the northwest's only commercial nuclear energy facility and is the third largest electricity generator in Washington state, behind the Grand Coulee and Chief Joseph dams. ...

LIQUID COOLING ENERGY STORAGE SYSTEM

EMS real-time monitoring
No container design
flexible site layout



Cycle Life **≥ 8000** Nominal Energy **200kwh** IP Grade **IP55**



[Columbia Generating Station](#)

Overview Design and function History Economics Spent fuel Surrounding population Potential risks Notes

Columbia Generating Station is a nuclear commercial energy facility located on the Hanford Site, 10 miles (16 km) north of Richland, Washington. It is owned and operated by Energy Northwest, a Washington state, not-for-profit joint operating agency. Licensed by the Nuclear Regulatory Commission in 1983, Columbia first produced electricity in May 1984, and entered commercial operation in December 1984.

[Nuclear power plant near Richland refueled, again supplying power to](#)

The Columbia Generating Station, the Northwest's only commercial nuclear power plant, is again supplying enough electricity to power about 1 million homes after a 65-day refueling outage. It



Contact Us

For catalog requests, pricing, or partnerships, please visit:
<https://www.motocykle3city.pl>