

# Assessment of the health of photovoltaic panels



## Overview

---

In this article, a non-invasive health monitoring of solar photovoltaic (PV) panels using Artificial Intelligence (AI) is investigated. Evaluating the health status of photovoltaic-storage integrated energy stations in a reasonable manner is essential for enhancing their safety and. Why is health management important in photovoltaic systems?

As global photovoltaic (PV) power generation capacity rapidly expands, efficient and effective health management of PV systems has emerged as a critical focal point. How accurate is a PV system health status assessment method?

Ding et al. Three sensors, each with a photodiode, were manufactured and mathematical models developed to interpret the fault results from the sensors.

## Assessment of the health of photovoltaic panels

---



### [Dynamic Assessment of Photovoltaic-Storage Integrated Energy](#)

To achieve an accurate and continuous assessment of the health status of photovoltaic-storage integrated energy stations, a dynamic evaluation method is proposed in this study. This

...

### [Health indicator construction and health status evaluation for the](#)

This paper presents a novel health status evaluation (HSE) method for photovoltaic (PV) arrays based on current-voltage (I-V) curve conversion. The primary objective is to develop a

...



### [Opto electronic system for real time health evaluation of photovoltaic](#)

In this study, a novel optoelectronic system for fault detection in photovoltaic (PV) cells has been developed.



### [Photovoltaic panel health quality assessment](#)

This article explores essential solar panel certifications and testing standards, detailing their critical role in ensuring panel quality, safety, and performance, and outlines necessary installer qualifications.



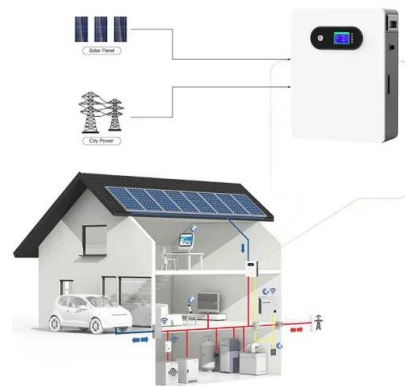
### [Opto electronic system for real time health evaluation of ...](#)

In the EL diagnostic technique for PV panels, a voltage is applied to the solar panels, inducing a current that generates light in the infrared or near-infrared region of the spectrum.



### [Impact assessment of photovoltaic panels with life cycle analysis](#)

Such analyses of energy technologies are crucial, as they can reveal the occurrence of hazardous emissions at distinct life cycle stages. In the present paper, a PV panel impact ...



### [Non-invasive health status diagnosis of solar PV panel using](#)

In this article, a non-invasive health monitoring of solar photovoltaic (PV) panels using Artificial Intelligence (AI) is investigated. Proper maintenance of solar PV panels is crucial for ...



### [Calculation of the health of photovoltaic panels](#)

A reliable calculation strategy of PLRs is important not only for health status checks of operating PV plants but also to increase the understanding of PV performance in general with respect to ...



### [A Reliability and Risk Assessment of Solar Photovoltaic Panels Using ...](#)

This paper develops a failure mode and effects analysis (FMEA) methodology to assess the reliability of and risk associated with polycrystalline PV panels.



### [A Review: Health Diagnostic of Photovoltaic and](#)

The health diagnostic assessment of photovoltaic systems is vital for ensuring their long-term performance and reliability. This review explores the comprehensi.



## Contact Us

---

For catalog requests, pricing, or partnerships, please visit:  
<https://www.motocykle3city.pl>